

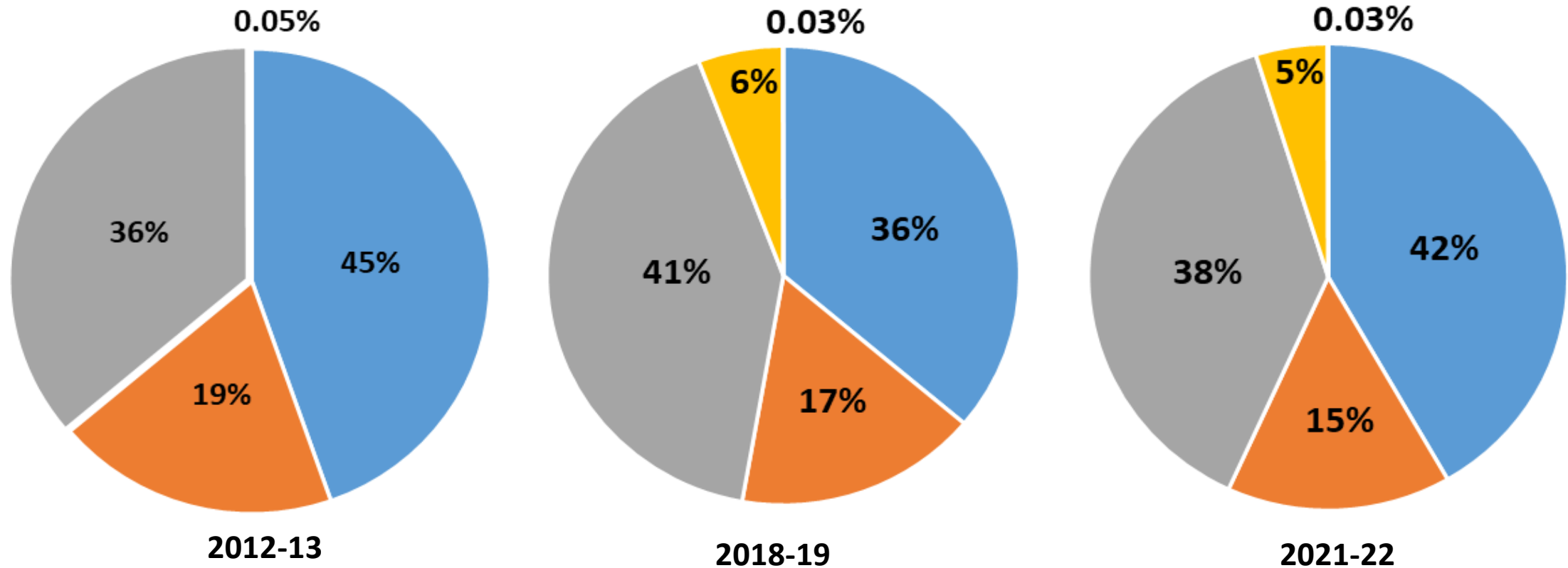


State of Municipal Education in Mumbai

December 2022

Out of the Total Student Enrollments in Mumbai Schools, the Proportion of BMC's School Enrollment Increased From 36% in 2018-19 to 42% in 2021-22

■ BMC ■ Private aided ■ Private unaided ■ Unrecognised ■ Other



The proportion of BMC Enrollments showed a declined from 45% in 2012-13 to 36% in 2018-19, and then increased from 2018-19 to 2021-22.

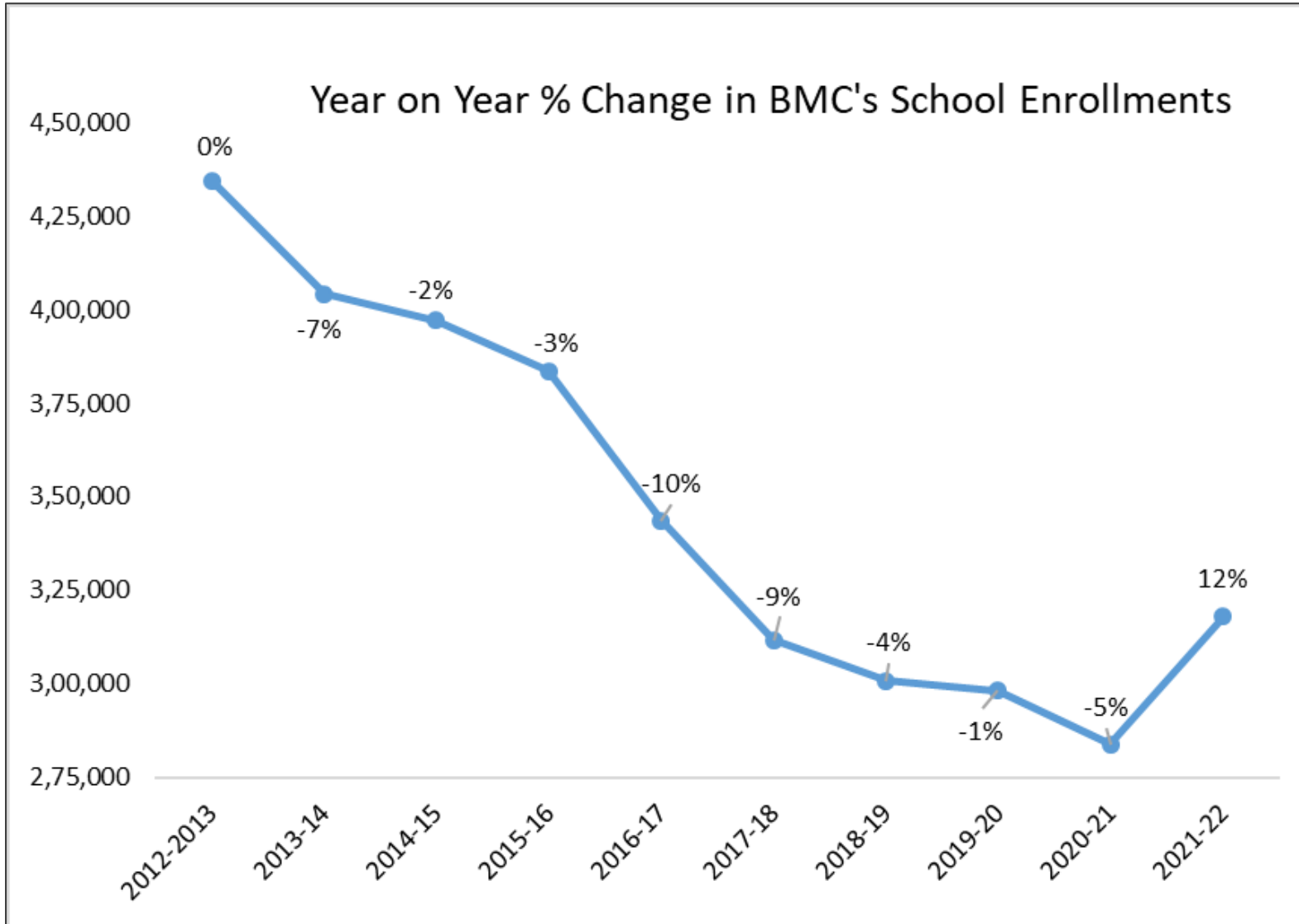
Note: 1) BMC enrollment data from 2012-13 to 2018-19 was taken via RTIs. Data from 2019-20 to 2021-22 is UDISE+ data which was taken from the Samagra Shiksha Abhiyan (SSA) office in BMC Education Dept.

2) Private aided, Private unaided, Unrecognised and Other school data taken from UDISE dash board, Source: <https://dashboard.udiseplus.gov.in/#/reportDashboard/sReport>

The Status of Student Enrollments in Brihanmumbai Municipal Corporation (BMC) Schools

- ❑ Over the years, BMC's School Enrollments continuously declined by 31% from 4,34,523 in 2012-13 to 3,00,746 in 2018-19.
- ❑ During COVID-19, BMC enrollments increased by 6% from 3,00,746 in 2018-19 to 3,18,002 in 2021-22.
- ❑ As many households faced challenges and one of them was financial issues, parents looked to BMC schools, to ensure their children continue their education.
- ❑ To understand the change in enrollments in the past ten years and the change before and after the pandemic, the education data for the academic years of 2012-13, 2018-19 and 2021-22 has been highlighted in the following analysis.

6% Increase in BMC's School Enrollments From from 3,00,746 in 2018-19 to 3,18,002 in 2021-22



- The year-on-year change in BMC Enrollments shows that from 2012-13 to 2018-19, enrollments were continuously declining.
- BMC's total enrollments decreased by 31% from 4,34,523 in 2012-13 to 3,00,746 in 2018-19.
- The increase in enrollments is an opportunity for the BMC Education Department to further strengthen the education system.

Note: 2012-13 has been taken as the base year

Standard Wise BMC Enrollments Increased by 78% (14,112 to 25,177) in Pre-Primary and 25% (15,034 to 18,781) in Std. 10th From 2018-19 to 2021-22

Standard	2012-13	2018-19	% Change from 2012-13 to 2018-19	2019-2020	2020-21	2021-22	% Change from 2018-19 to 2021-22
Pre Primary							
Pre Primary	7,178	14,112	97%	26,719	20,359	25,177	78%
Lower Primary							
1	46,913	27,918	-40%	26,175	19,753	30,412	9%
2	58,683	30,091	-49%	28,382	26,810	28,505	-5%
3	61,924	32,104	-48%	29,482	28,475	31,409	-2%
4	59,160	32,763	-45%	31,477	29,502	32,016	-2%
Upper Primary							
5	52,886	34,000	-36%	31,564	31,220	32,675	-4%
6	51,785	33,075	-36%	32,229	31,274	33,353	1%
7	49,217	33,115	-33%	31,222	31,595	32,736	-1%
8	16,058	28,759	79%	27,432	28,381	30,979	8%
Secondary							
9	17,863	19,775	11%	18,994	20,391	21,959	11%
10	12,856	15,034	17%	14,539	15,959	18,781	25%
Total	4,34,523	3,00,746	-31%	2,98,215	2,83,719	3,18,002	6%

Over the years, from 2012-13 to 2018-19, BMC enrollments saw an increase in pre-primary section and in Std. 8th, 9th and 10th

From 2018-19 to 2021-22, Std. 1 enrollments increased by 9%, Std. 8th enrollments increased by 8% and Std. 9th enrollments increased by 11%.

27% Increase in Student Enrollments in BMC's English Medium Schools From 79,884 in 2018-19 to 1,01,110 in 2021-22

Standard	2012-13	2018-19	% Change from 2012-13 to 2018-19	2019-2020	2020-21	2021-22	% Change from 2018-19 to 2021-22
English	57,235	79,884	40	83,076	85,474	1,01,110	27
Marathi	1,03,048	50,677	-51	53,730	50,897	51,691	2
Urdu	1,14,521	79,344	-31	76,354	71,821	80,611	2
Gujarati	7,037	2,512	-64	2,642	2,396	2,445	-3
Hindi	1,37,315	81,431	-41	76,861	68,149	76,990	-5
Tamil	8,011	3,838	-52	3,625	3,250	3,224	-16
Kannada	3,601	1,625	-55	1,200	1,116	1,319	-19
Telugu	2,978	815	-73	727	616	612	-25

- The highest medium-wise enrollment from 2018-19 to 2021-22 was in BMC's English medium schools.
- In the same period, enrollments in both BMC's Marathi and Urdu medium schools increased by 2%.
- While other mediums saw a decrease in enrollments from 2018-19 to 2021-22.

125% Increase in BMC's Pre-Primary Std. (Non-MPS) From 7,764 in 2018-19 to 17,504 in 2021-22

Years	2014-15	2018-19	% change from 2014-15 to 2018-19	2019-20	2020-21	2021-22	% change from 2018-19 to 2021-22
Total BMC Student Enrollments							
All BMC Schools	3,97,085	3,00,746	-24%	2,98,215	2,83,719	3,18,002	6%
BMC Schools (Non-MPS)	3,69,621	2,61,395	-29%	2,56,866	2,38,903	2,65,340	2%
BMC Pre Primary (Non-MPS)	0	7,764	0	19,619	14,522	17,504	125%
Total MPS Enrollments and Standard-wise MPS Enrollments							
MPS Schools	27,464	39,351	43%	41,349	44,816	52,662	34%
Pre Primary	6,968	6,348	-9%	7,100	5,837	7,673	21%
1	4,097	3,792	-7%	3,905	4,132	5,363	41%
2	3,906	3,702	-5%	3,755	4,379	5,045	36%
3	3,504	3,780	8%	3,610	4,170	4,961	31%
4	3,171	3,783	19%	3,727	4,100	4,680	24%
5	2,502	3,761	50%	3,748	4,197	4,570	22%
6	1,783	3,548	99%	3,785	4,177	4,644	31%
7	1,064	3,151	196%	3,483	3,859	4,232	34%
8	469	2,955	530%	3,208	3,643	4,110	39%
9	0	2,712	-	2,938	3,720	4,024	48%
10	0	1,819	-	2,090	2,602	3,360	85%

- Since the maximum entry of enrollments from 2018-19 to 2021-22 was in the pre-primary std., BMC should adopt the MPS format in all schools to ensure a student can complete their school education up to 10th in a single school.

Note: For 2019-20, 2020-21, and 2021-22, MPS schools were mapped from the UDISE+ data.

Only 40% (18,781 out of 46,913) of BMC Students Enrolled in Std. 1 in 2012-13, Continued Their Education up to Std. 10th in 2021-22.

Standard	Academic Year	Total Enrolment	Retention Rate compared to Class 1 Enrollment
1	2012-13	46,913	-
2	2013-14	49,398	105.3%
3	2014-15	50,938	108.6%
4	2015-16	50,141	106.9%
5	2016-17	41,684	88.9%
6	2017-18	34,755	74.1%
7	2018-19	33,115	70.6%
8	2019-20	27,432	58.5%
9	2020-21	20,391	43.5%
10	2021-22	18,781	40.0%

- Retention rates from 1st to 10th show that after 7th Std. there is a fall in retention rates of students.
- The focus should be to adequately create more secondary schools to ensure all the students in BMC schools complete their education.

Note: Data from 2012-13 to 2018-19 was taken via RTIs. Data from 2019-20 to 2021-22 is UDISE+ data which was taken from the Samagra Shiksha Abhiyan (SSA) office in BMC Education Dept.

In 2021-22, the Pupil Teacher Ratio in BMC's English Medium Schools was 41, While RTE Norms Mention the PTR Should be 30

Medium	No. of BMC Schools	Students (Includes Pre-Primary, Primary and Secondary)	Teachers (Includes HM, Vice-principal/Dy. HM, Teachers, Special Teachers)	Students per Teacher
English	169	1,01,110	2,452	41
Urdu	232	80,611	2,283	35
Hindi	265	76,990	2,624	29
Marathi	360	51,691	1,985	26
Tamil	30	3,224	138	23
Gujarati	46	2,445	145	17
Kannada	29	1,319	93	14
Telugu	15	612	35	17
Total	1,146	3,18,002	9,755	33

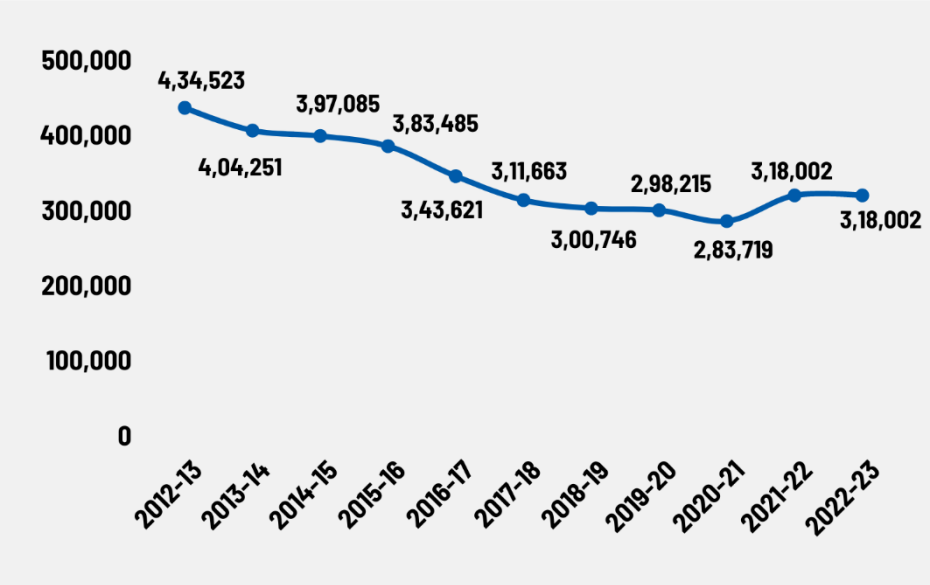
- This is due to an increase in student enrollments in BMC English medium schools by 27% from 79,884 in 2018-19 to 1,01,110 in 2021-22.
- This could be a shift in preferences of parents to enroll their children in BMC schools rather than private schools; and BMC should provide adequate teaching staff to further improve the quality of education.

Only 26% (84,247) of BMC Students were Examined in BMC's School Health Checkup in 2021-22

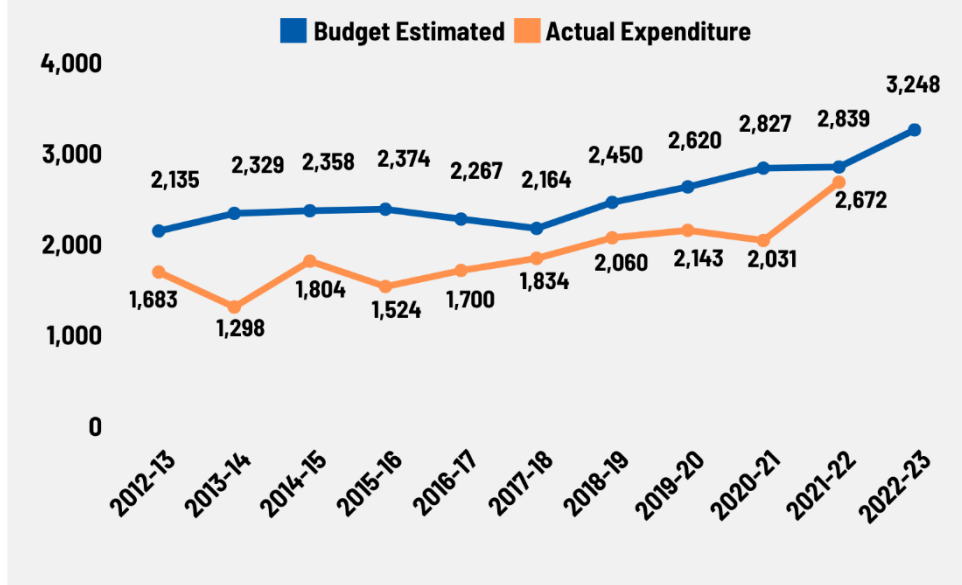
Year	2014-15	2015-16	2016-17	2017-18	2018-19	2019-20	2020-21	2021-22
Total Students	3,97,085	3,83,485	3,43,621	3,11,663	3,00,746	2,98,215	2,83,719	3,18,002
Number of Students Examined	2,01,597	1,89,809	2,35,823	2,32,706	2,26,066	1,74,464	Due to Covid-19 health check-up is not done	84,247
% of students examined	51%	49%	69%	75%	75%	59%		26%

The School Health Check-ups program has been carried out since 46 years*. On average 51% of students have been examined from 2014-15 to 2021-22. However, given the sufficient budgetary allocations as well as the various health concerns brought on due to the pandemic, the BMC education budget should conduct health check-ups for all BMC students

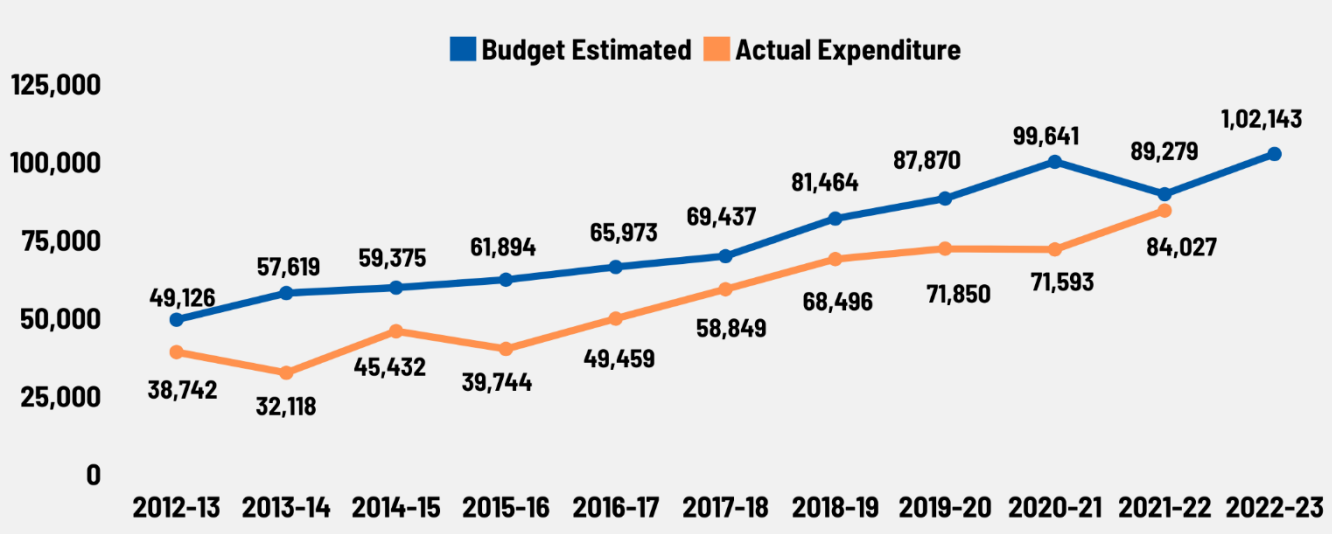
Total Student Enrollments In BMC Schools



BMC Education Budget Expenditure (In Crores)



BMC's Per Student Education Budget (In Rupees)

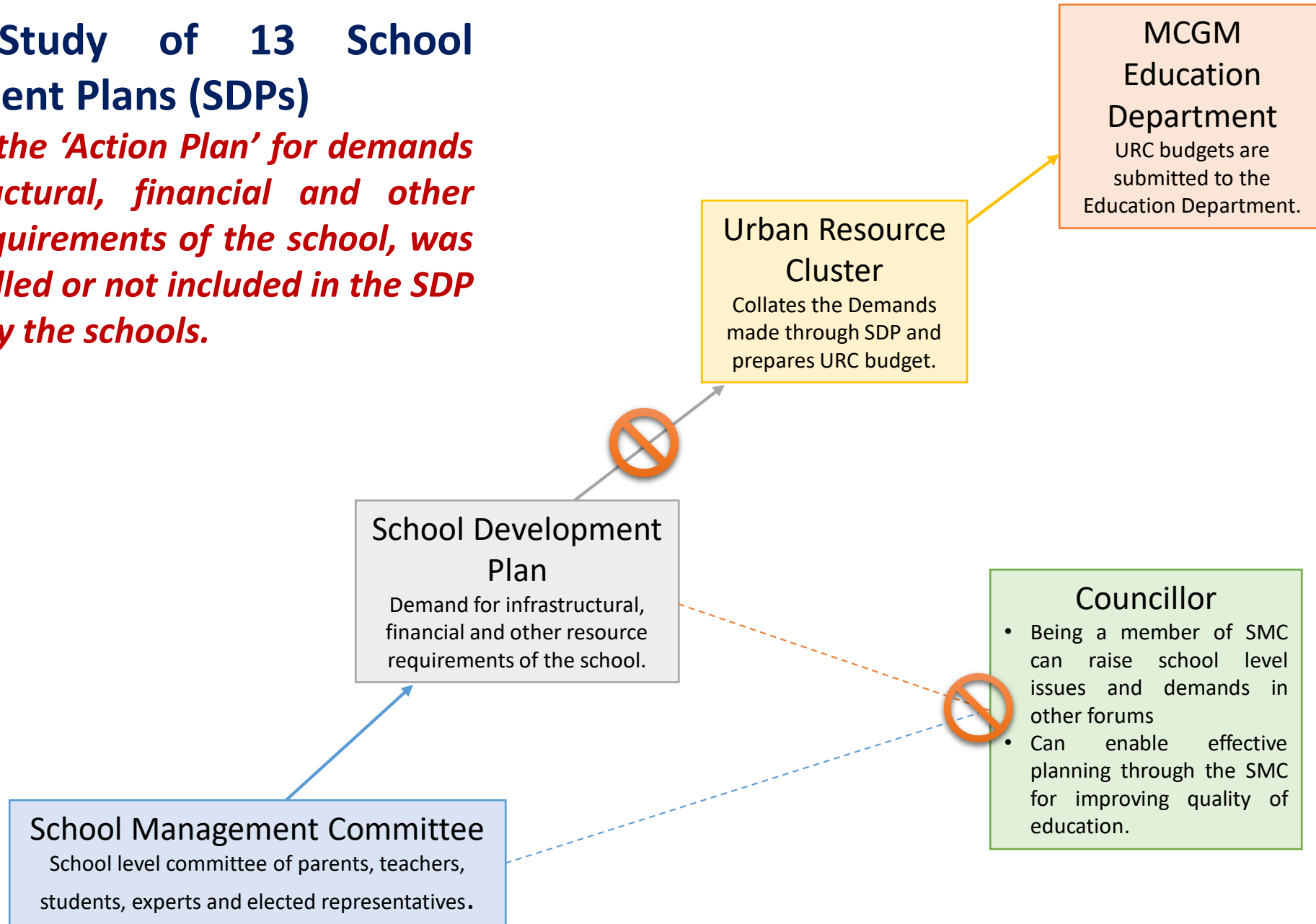


- The BMC Education Budget estimates increased by 52% from FY 2012-13 to FY 2022-23.
- In FY 2022-23, the Per Student Budget Estimates are as high as Rs. 1,02,143.
- Over the years, 23% of the BMC Education Budget from FY 2012-13 to FY 2021-22 was not utilised.

Note: The actuals for F.Y 2021-22 were received via an RTI.

Sample Study of 13 School Development Plans (SDPs)

shows that the 'Action Plan' for demands of infrastructural, financial and other resource requirements of the school, was either not filled or not included in the SDP submitted by the schools.



From 2019-20 to 2021-22, Out of 13 School SDP Samples, Only 2 (15%) Schools Filled the Action Plan in the SDP

		2016-17	2017-18	2018-19	2019-20	2020-21	2021-22
Number of schools (data received)		802	799	889	685	684	684
Yes	No.	785	781	885	652	650	666
	%	97.88%	97.75%	99.55%	96.59%	96.15%	97.80%
No	No.	17	18	4	23	26	15
	%	2.12%	2.25%	0.45%	3.41%	3.85%	2.20%

However, as currently there is no deliberative wing in BMC, it has impacted the overall process of the SDP. Although, in 2021-22, out of 684 BMC schools (for which data was received), 98% prepared an SDP, a sample study of 13 schools showed that **15% of schools did not fill the section 'कृती आराखडा' (Action Plan outlining school requirements) in the SDP from 2019-20 to 2021-22**

BMC Education Committee Meetings Increase by 176% From 21 in 2019-20 to 58 in 2021-22

Year	Total Meetings	Attendance (%)	Total Question in Education Committee
2012-13	19	67%	62
2013-14	15	66%	45
2014-15	30	65%	44
2015-16	33	71%	86
2016-17	25	59%	102
2017-18	29	74%	100
2018-19	37	77%	88
2019-20	21	59%	99
2020-21	21	73%	32
2021-22	58	73%	72

- As compared to previous years, the BMC education committee had the maximum number of meetings in 2021-22 (58).
- However, the number of questions asked in the education committee decreased by 27% from 2019-20 to 2021-22.

Only 7% (732) Out of 11,102 Questions Asked by Mumbai Councillors in the Last Term From April 2017 to March 2022

- Despite a high Pupil-Teacher Ratio in BMC English medium Schools, Only 11% (39) out of 347 total education questions asked by Councillors were related to teaching staff from 2019-20 to 2021-22.
- Only one question was asked by Councillors on the Health Check-ups for BMC Students from 2019-20 to 2021-22.
- Mumbai MLAs did not ask any questions on Health check-ups for BMC students from Winter Session 2019 to Monsoon 2021.
- Only two questions was raised by Mumbai MLAs on the closure of BMC schools in Mumbai from Winter Session 2019 to Monsoon 2021.

Recommendations (1/2)

The BMC Education Department **should take the opportunity to Strengthen the Education System to ensure Quality Education** is provided to the students. This can be done through the following;

- With an **Outcome-Based Budget**, so targeted interventions can be formulated to address the current gaps in the education system. Moreover, budgetary allocations should be utilised effectively.
- **Adequate Teaching Staff** should be available in all BMC schools so that the Pupil-teacher ratio is as mentioned in the Right to Education Act, 2009. Moreover, BMC education department should have adequate staff for efficient management of the BMC's education system.
- The **Mumbai Public School (MPS) format** where education is provided from Pre Primary to Std. 10th should be adopted in other BMC schools as well.
- In addition, BMC should build schools as independent entities with adequate powers and responsibilities and **Empower the school leader (HM/Principal) and School Management Committees.**

Recommendations (2/2)

There is a need to encourage **Accountability in BMC Education System;**

- The BMC education department should maintain a **Robust Education MIS** to track the education input and output indicators. BMC should also present an annual report on its achievements and learnings with all the key performance/outcome indicators **and share this data on an Open Platform.**
- **Independent (third-party) Monitoring and Reporting** of the quality of teachers, schools and learning outcomes of students should be done.
- **Elected Representatives (ERs) should Monitor and Hold the Administration Accountable** to ensure that desired outcomes for the education system are achieved. The ERS should also **actively Meet and Deliberate** on the utilisation of budgetary allocations.
- **Proper training for SMC (School Management Committee) members and ERs need to actively participate in the preparation of SDP**, so that school-level demands can be raised and addressed in forums such as the ward committee, especially for budget making.

Thank You!

To know more:

 www.praja.org

Mumbai: B18, 2nd Floor, Shri Ram Industrial Estate, 13,
G.D Ambekar Marg, Next to Wadala Udyog Bhawan,
Wadala, Mumbai-400031 Office phone no. : 022-66661442.

Delhi: Room No. 404, 4th Floor, Pratap Bhawan, 5,
Bahadur Shah Zafar Marg, New Delhi-110002

Presented By



Supported By



**FRIEDRICH NAUMANN
FOUNDATION** For Freedom.
South Asia

**Madhu Mehta
Foundation**

and various other individual donors and organisations.

